

PRECISION ACCRETECH BLADE  
**RESIN BOND BLADES**  
**FOR LEADFLAME PACKAGES**

**PG series**

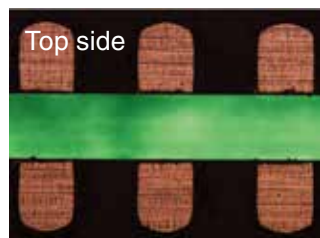


**Resin blade series for lead frame package cuttings.**  
**Realizes high cutting quality and long life.**



- Resin blade series for lead frame package cuttings such as QFN and DFN.
- A variation is expanded in pursuit of the high-speed cutting, long life, and stable cutting quality.

■ Processing example Resin blade (PG101)



■ QFN cutting  
 $n=20,000 \text{ min}^{-1}$   
 $f=70 \text{ mm/sec}$

■ High-quality cutting can be achieved by minimizing burrs under high-speed conditions.



#### ■ Specification and Notation

**1A8**

Shape

**SDC**      **230**      -      **75**      **PG101**

Grit type      Mesh size      Concentration      Bond

#### ■ Grit type

SDC	Coating
-----	---------

#### ■ Availability by mesh size

Mesh size
# 170
# 200
# 230
# 270
# 325

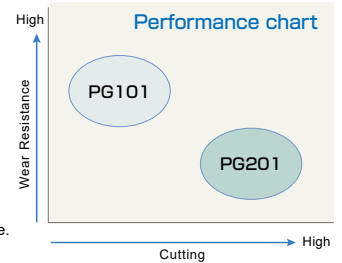
#### ■ Concentration

50, 75, 100
-------------

#### ■ Bond

PG101	Life oriented
PG201	Quality oriented

\*Newly developed bond PG102 and PG202 are limited in manufacturing range.



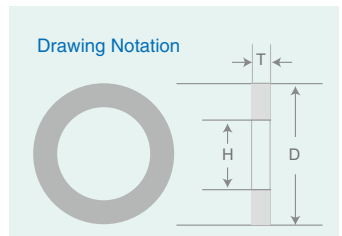
#### ■ Dimension and Notation

**58D**      **0.2T**      **40H**

O.D.      Blade thickness      I.D.

#### ■ Production Range

O.D. (mm)		Blade thickness (mm)		I.D. (mm)
Availability size	Tolerance	Availability size	Tolerance	Availability size
50~62	+0.1 -0	0.17≤T≤0.35 0.35<T≤0.4	±0.01 ±0.02	40



#### ■ Production Range

Mesh size	Blade thickness (mm)				
	0.17≤T≤0.2	0.2<T≤0.25	0.25<T≤0.3	0.3<T≤0.35	0.35<T≤0.4
# 170				●	●
# 200				●	●
# 230			●	●	
# 270		●	●	●	
# 325	●	●	●		

Consult us for the specification other than described in this catalogue.

#### ■ Ordering the product

When ordering our product, please refer to our catalog and let us know the details of the product as below.

- 1) Shape and size/ Detailed blade shape and precision etc.
- 2) Specifications/ Desired specification as well as the current in-use blade etc.
- 3) Cutting work and condition/ Machine in use, RPM, feed speed, coolant flow rate etc.

#### ■ Precautions

In order to use the product safely and to bring out the best of the blade's performance, please make sure to thoroughly read the specifications and other related materials of the product.

- \* The catalog is subject to change without notice.
- \* The catalog is not to guarantee the product quality.