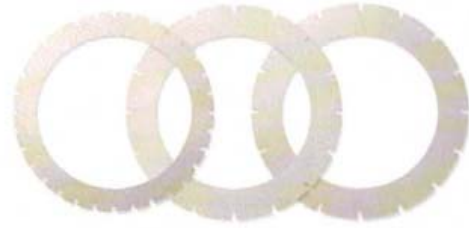
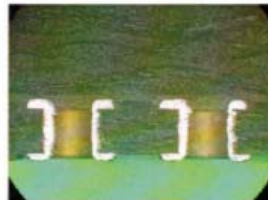
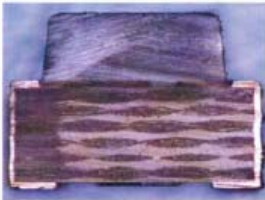


# PRECISION ACCRETECH BLADE NICKEL BOND BLADES LY type



- Blade that can satisfy the reduction in cost
- Challenged to reduce the manufacturing costs to the limit and realized the price that can be accepted anywhere in the world.
- Succeeded the capability of the standard M type.

## ■ Processing example Nickel blade (LY type)



■ Has realized the same processing quality as M type.  
Nickel bond blade suitable for mass production which realized cost-cutting by limiting specifications and dimensions.

■ Possible order: 500 pieces for 1lot /month  
With reasonable price, we provide blade with stable quality to satisfy the mass use.

### ■ Specification

<b>D</b>	<b>8/20</b>	-	<b>L-YDS</b>
Grit type	Grit size		Type

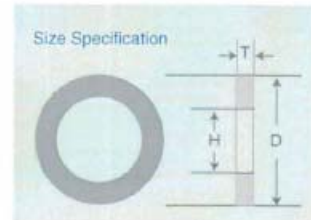
### ■ Dimension

<b>56D</b>	<b>0.1T</b>	<b>40H</b>	<b>2D</b>	<b>1W</b>	<b>16N</b>
O.D.	Blade thickness	I.D.	Depth of slit	Width of slit	No. of slit

### ■ Standard Dimension

O.D.(mm)		Blade thickness(mm)		I.D. (mm)	
Availability size	Tolerance	Availability size	Tolerance	Availability size	Tolerance
56	+0.02 -0	0.1	±0.005	40	H6

\*Note: The above is the only one blade to be manufactured.



### ■ Availability by grit size

Grit size (um)	Mesh size
8/20	800
12/25	700

